

San-Flo

Washing Machines



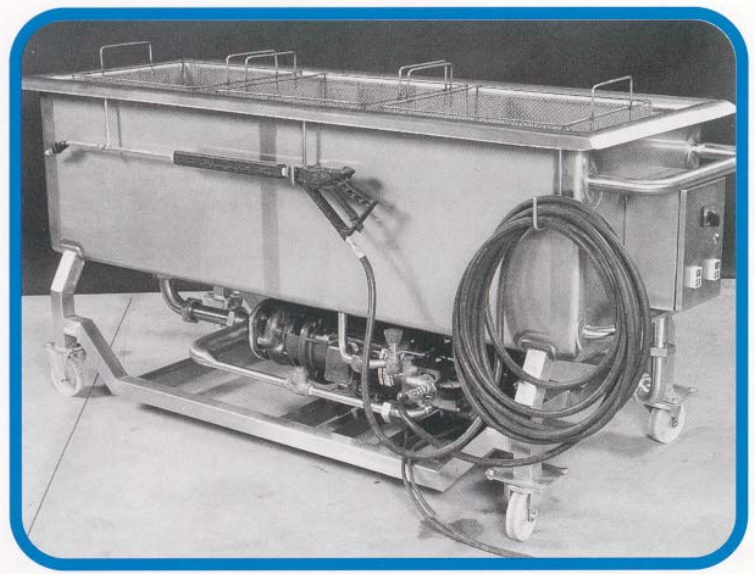
Universal Tunnel Washers

Custom designed and manufactured in Australia for the sanitary and hygienic washing of food containers , crates , pallets , drums , etc.

With rugged practical designs constructed of stainless steel giving versatile usage , San-flo tunnel washers are a quality investment for those in the food industry where hygiene is of prime importance.

Turbo Recirculation Washers

These tri-purpose portable washers clean parts , components and fixed machines with a unique combination of chemical and mechanical action to soften foreign materials. Residues are then washed away by the scrubbing action of the rapidly circulating wash solution. San-flo Turbo Recirculation Washers are expertly manufactured to exceed industrial standards and provide optimum life with quality results.



A.B.N. 73 065 365 031

Food Process Engineering Pty. Ltd.

14 Margaret Street , Research
Victoria , Australia 3095
Telephone : 61 3 9437 1255
Facsimile : 61 3 9437 0519
Email : info@foodpro.com.au
Internet : www.foodpro.com.au

ASSOA MEMBER



Member
Food Industry Machinery Manufacturers Association

UNIVERSAL TUNNEL WASHERS

APPLICATIONS	Washes , sanitises and dries ; *Boxes *Crates * Pans *Moulds *Drums *Forms *Pallets *Trays *Wire grid and Baskets.
TYPES	*Pallet Washers *Rotary Washers * Cabinet Washers *Space Saver Washer/Dryer.
FEATURES	*All stainless steel construction. *Easy to service and clean. *Variable throughput. *Low noise pumps. *Rinse water recovery. *Full width stainless steel screens.
OPTIONS	*Belt width from 500mm to 1500mm. *Total length from 3m to 9m. *Guides and carriers for different shapes and weights. *Direct and indirect heating. *High pressure wash section. *Cutting type spray nozzles. *Insulated chambers. *Automatic chemical dosing.

TURBO RECIRCULATION WASHERS

DESCRIPTION	Tri-purpose Turbo Recirculation Washer.
APPLICATIONS	C.O.P. *Parts , fittings and utensils. C.I.P. *Tanks and process lines. C.H.P. *Equipment exteriors , floors , walls , etc.
TANK SIZE	650 litre , 1880mm long x 610mm wide x 360mm deep.
CONSTRUCTION	Heavy gauge all AISI304 stainless steel.
PUMP ASSEMBLY	4.0kW (5.5HP) TEFC Ip55 3/50/415V. Cast iron body - stainless steel impellor.
OPTIONS	*Steam heating to 80 degrees Celsius incorporating 20kW heat exchange. *Electric heating to 80 degrees Celsius incorporating 20kW in-line circulation heater. *CHP high pressure gun assembly. *CIP valve assembly